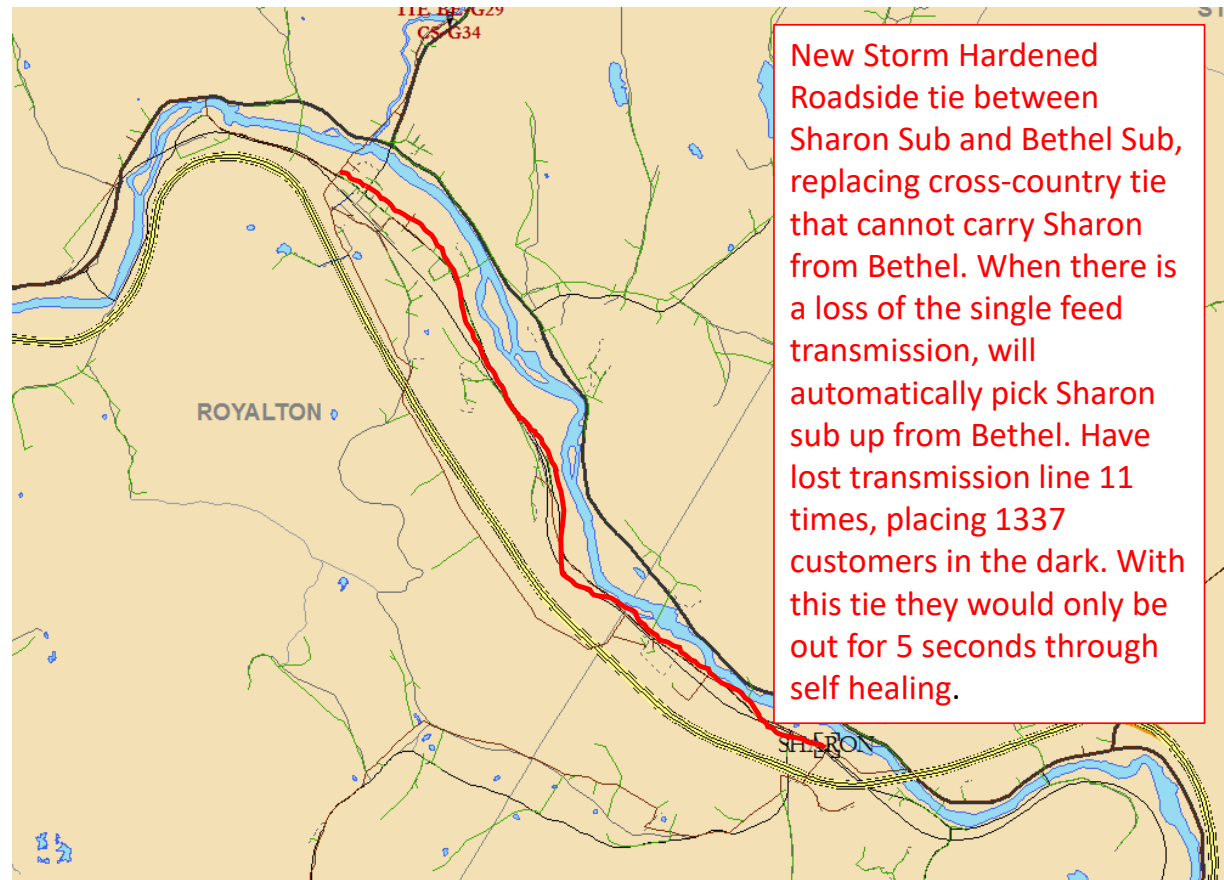


## Example Distribution Line Project Sheets

### Sharon Strafford – GMP Royalton District

### Sharon Sub (SH-G35) – 1,337 Customers

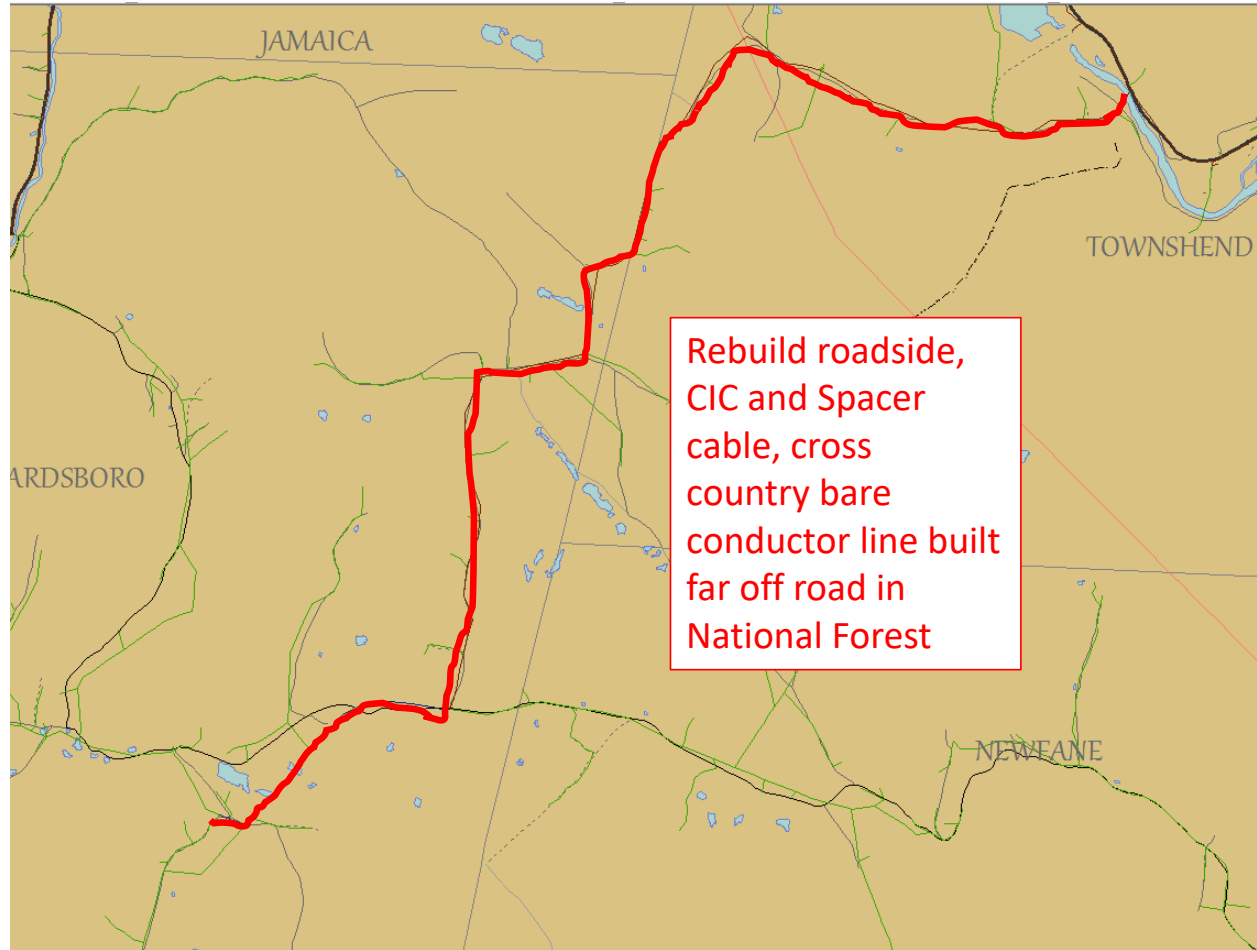
Improvement:	Hendrix L.29 P.180 to P.295
Worst Circuit Ranking (out of 281):	#1
Ice Estimate (Annual)	\$121,422.05
Customer Demographic:	Residential
Est. Customers in Project:	1337
Total Customer Hrs Out (CHO):	22903
CAIDI:	6.4
SAIFI:	1.9
SAIDI:	11.9
Assets Age > 40 Years Old:	Yes
Asset Condition – Plant:	Poor
Asset Location:	Existing X-Country
Asset Type – Wire:	Bare



New Storm Hardened Roadside tie between Sharon Sub and Bethel Sub, replacing cross-country tie that cannot carry Sharon from Bethel. When there is a loss of the single feed transmission, will automatically pick Sharon sub up from Bethel. Have lost transmission line 11 times, placing 1337 customers in the dark. With this tie they would only be out for 5 seconds through self healing.

# Townsend, Wardsboro, Dover – GMP Brattleboro District East Jamaica Sub (EJ-G7) – 2617 Customers

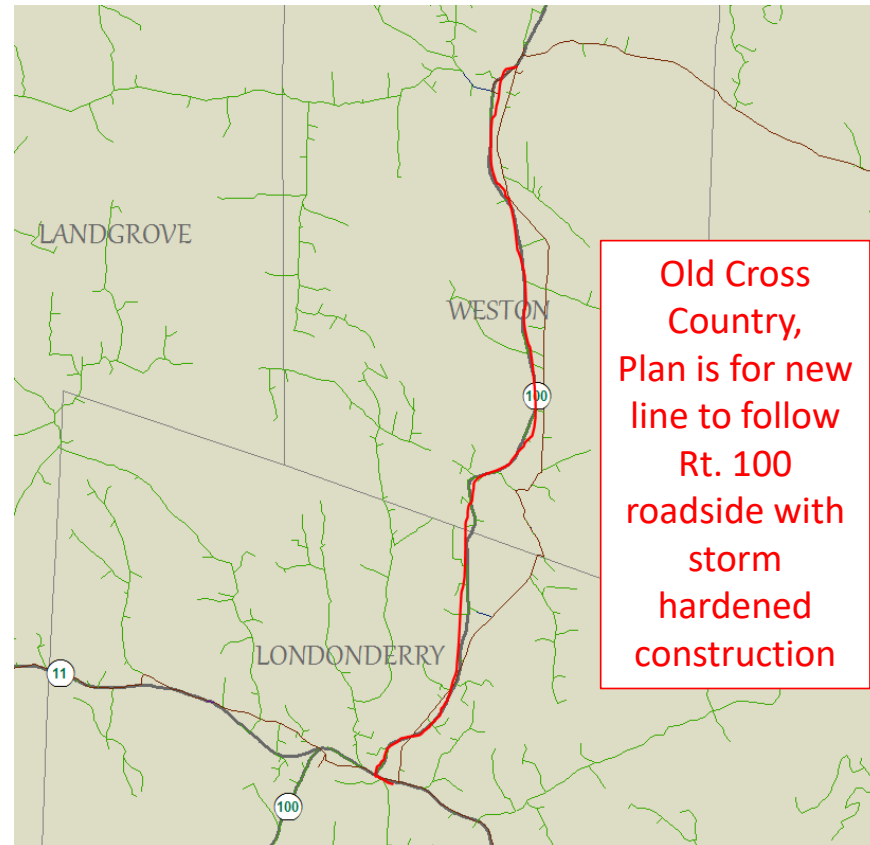
Improvement:	LVH4A P30-P102
Worst Circuit Ranking (out of 281):	#2
Ice Estimate (Annual)	\$286,070.57
Customer Demographic:	Residential
Est. Customers in Project:	353
Total Customer Hrs Out (CHO):	15018
CAIDI:	5.3
SAIFI:	6.8
SAIDI:	35.9
Assets Age > 40 Years Old:	Yes
Asset Condition – Plant:	Poor
Asset Location:	Road / X-Country
Asset Type – Wire:	Bare



# Londonderry & Weston – GMP Springfield District

## Londonderry Sub (LO-G27) - 1,844 Customers

Improvement:	Spacer Cable L.6 P.1 to Weston Village
Worst Circuit Ranking (out of 281):	#5
Ice Estimate (Annual)	\$233,342.02
Customer Demographic:	Village / City
Est. Customers in Project:	1,007
Total Customer Hrs Out (CHO):	90261
CAIDI:	12.8
SAIFI:	2.7
SAIDI:	34.6
Assets Age > 40 Years Old:	Yes
Asset Condition – Plant:	Poor
Asset Location:	Road / X-Country
Asset Type – Wire:	Bare



# Windham – GMP Springfield District Londonderry Sub (LO-G26) - 963 Customers

Improvement:	Covered Wire L.15 to into Windham
Worst Circuit Ranking (out of 281):	#4
Ice Estimate (Annual)	\$276,292.01
Customer Demographic:	Village / City
Est. Customers in Project:	349
Total Customer Hrs Out (CHO):	7240
CAIDI:	6.1
SAIFI:	3.4
SAIDI:	20.7
Assets Age > 40 Years Old:	Yes
Asset Condition – Plant:	Poor
Asset Location:	Road / X-Country
Asset Type – Wire:	Bare

